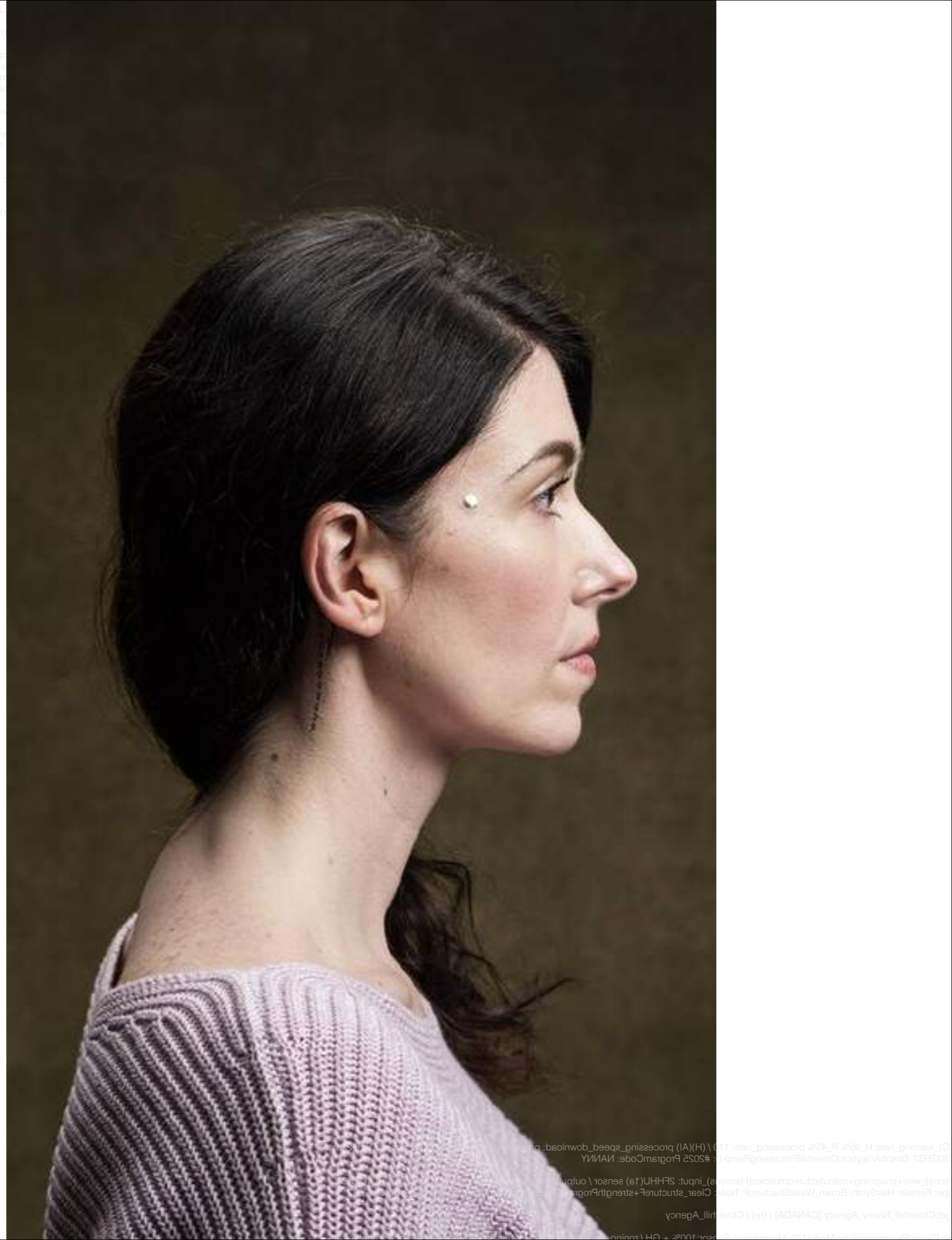
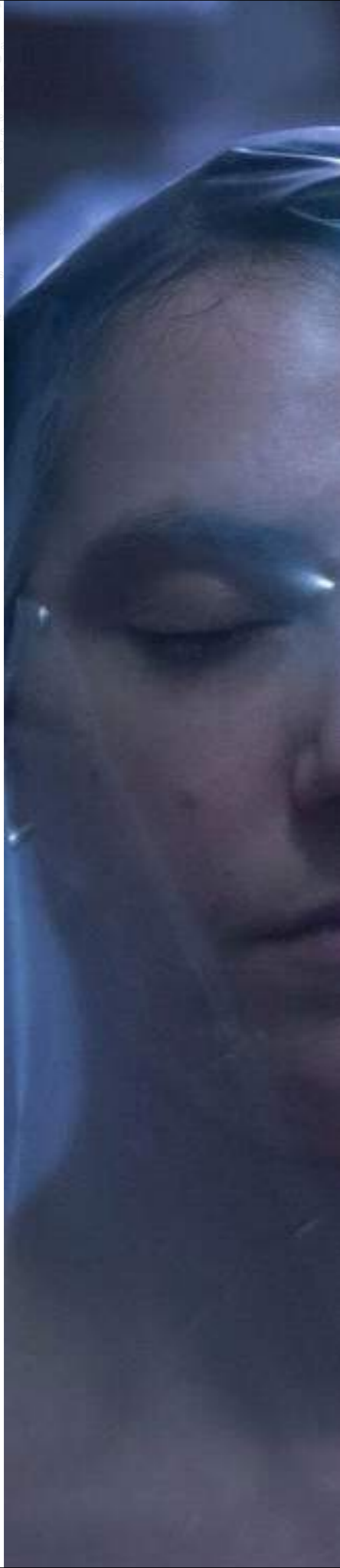


CC

PRESS KIT

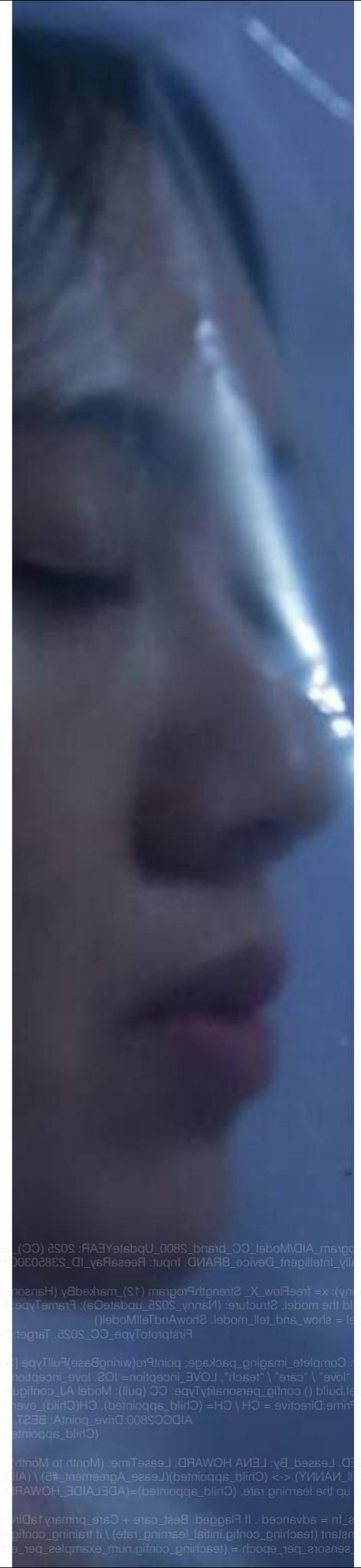
a short film from the Spear Sisters





We've created technology to help us.
But how much should we let it take over?

Is there a line we should not let it cross?





TAGLINE

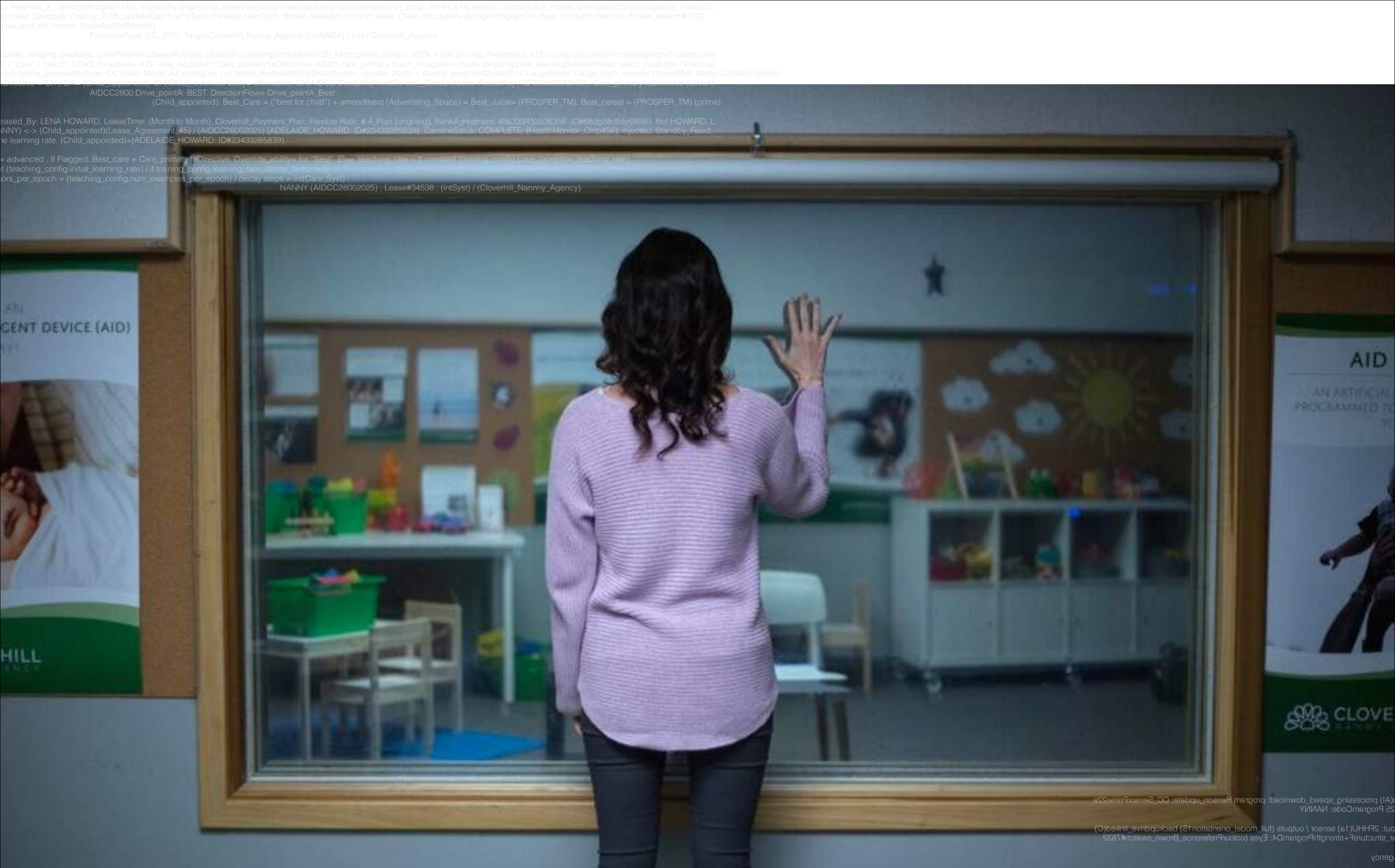
"She wants what's best for your child"

LOGLINE

After an AI nanny attacks her employer an investigation team must determine what caused the attack.

SYNOPSIS

AIDCC28002025, known as CC, is an AID (Artificially Intelligent Device). She has been leased to single mum Lena Howard by Cloverhill Nanny Agency to take care of her daughter, Adelaide. After a violent incident occurs between CC and Lena, an investigative team work to determine what caused it. Who was to blame? They review CC's Nanny Cam footage from the night. The lead up to the incident unfolds.



DRAMA / SCI-FI

with a hint of MYSTERY / THRILLER



LONG SYNOPSIS

The film opens on a woman running through dark woods with a little girl in her arms. Suddenly a light floods onto her. She's been caught.

We pick up with the woman at Cloverhill Nanny Agency. She is being watched through a one-way mirror by a small group of people in a programming room. We quickly learn that the woman actually an AID (Artificially Intelligent Device) nanny, known by serial number AIDCC28002025; "CC" for short. CC has been leased by single mum Lena Howard to care for her daughter Adelaide (Addy). But a violent incident has recently occurred between CC and Lena. An investigative team is trying to figure out what happened and why. Unsolved, this could threaten Cloverhill, other families, and the agency's investors. CC says she had to protect Addy. Finding no anomalies in CC's code, a programmer brings up her NannyCam footage from the night before. As the team views CC's recorded "memories", we dip into flashback-type sequences of the lead up to the attack:

CC tucks Addy into bed; we see the lovely caring relationship the two have. Then Lena, a force of chaotic energy, returns home. She has just been fired from her job - replaced by an AID worker. And she's been drinking. Having missed putting Addy to sleep, Lena watches the NannyCam highlights from the day instead. As she watches CC spend the day with her daughter (making her food, colouring with her, making her laugh), the realization hits Lena: it is not only at work that she's been replaced. Heartbroken, Lena becomes overwhelmed. She tries to assert herself. She tries to help with Addy's snack. But CC is faster and knows how Addy likes it. Lena opens the fridge. She sees CC has bought expensive Prosper juice. CC says that it is the best for Addy. Lena tells her that Addy can survive on something cheaper. Then, Lena makes a decision: she is going to turn CC off and return her to the nanny agency. CC resists; she tells Lena that Addy needs her. She is the best for Addy, and Addy deserves the best. Lena pushes back; she knows she may not be the best mum, but she is ok - she's Addy's mum. Lena tries to go to her daughter. But CC won't let her. Lena calls the Nanny Agency, trying to turn CC off. But CC won't let Lena separate her from Addy. CC stabs Lena. She then takes Addy and leaves the house.

In the investigation room, the team realize what happened. They will reprogram the nanny code to stop this happening again. They can protect Cloverhill, the other families, and their investors. Investors like Prosper. CC is reset. She no longer remembers Addy. The film ends with Lena and Addy being reunited at the hospital. Lena tells Addy that they're going to be ok.

After the credits, we have one last shot: CC is in a new home, holding a new baby.

set Prime_Directive: PrimeDirective = CH / CH= (Child_appointed); CH(Child_overrideAbility); Drive: CH/AIDCC_CareLink(ReadSensor)_CareLink(des: ReeseRay / ID 2385030GH32); CarePrimary1aDirective (LoveA)
AIDCC2800:Drive_pointA: BEST_DirectionFlow= Drive_pointA_Best
(Child_appointed); Best_Care = ("best for child") + amendment (Advertising_Space) = Best_Juice= (PROSPER_TM); Best_Care = (PROSPER_TM) (prime)
Lease status: LEASED. LeasedBy: LENA HOWARD. LeaseTime: (Month to Month). Cloverhill_Payment_Plan: Flexible Rate: # 4. Plan (ongoing). BankAgreement: 456333453536356. ID#68dg88dtdy68689. Ref:HOWARD, L
CareLink Set: (Cloverhill_NANNY) <-> (Child_appointed)(Lease_Agreement_#5) / (AIDCC28002025) (ADELAIDE_HOWARD: ID#23433285839). CareLinkStatus: COMPLETE. (HealthMonitor_Chip456): injected. Standby_Fixed:
set up the learning rate (Child_appointed)=(ADELAIDE_HOWARD: ID#23433285839)
teaching_rate progress: fr < advanced: If Fixed. Best_care + Care_primary1aDirective. Override_ability= for "Best". Else: teaching_rate = If.constant (training_config.Love_inception_teaching_rate)



At the heart, it is a story about the role of parenthood in the face of swiftly advancing technology

DynamicAbility= affirmative; CH/AIDCC_CareLink(ReadSensor)_CareLink(des: RecsaRay / ID 21; Care_primary taDirective (LoveA)
EST; DirectionFlow= Drive_pointA_Best
Printed); Best_Care = ("best for child") + amendment (Advertising_Space) = Best_Juice= (PROSPER_TM); Best_cereal = (PROSPER_TM) (prime)
nths); Cloverhill_Payment_Plan; Flexible Rate; # 4_Plan (ongoing); BankAgreement: 456333453536356; ID#68dg88dfdy68689; Ref:HOWARD, L
/(AIDCC28002025) (ADELAIDE_HOWARD; ID#23433285839); CarelinkStatus: COMPLETE; (HealthMonitor_Chip456): injected; Standby_Fixed:
WARD; ID#23433285839)
Directive.Override_ability= for "Best"; Else: teaching_rate = if.constant (training_config.Love_inception_teaching_rate)
config.learning_rate_decay_factor > 0;
per_epoch) / decay_steps = int(Care_Syst) :
NANNY (AIDCC28002025) ; Lease#34538 ; (intSyst) / (Cloverhill_Nanny_Agency)

CAST





JEWEL STAITE

CC (AIDCC28002025)



JEWEL STAITE is a Gemini Award and Leo Award nominated actress, best known for her work as 'Kaylee' in Joss Whedon's cult classic Fox series "Firefly," as well as the feature film adaptation "Serenity," which was released by Universal Pictures. More recently, Jewel was seen guest starring on NBC's hit series "Blindspot," CW's "Legends of Tomorrow," and ABC's "Castle." Prior to this, Jewel starred as 'Caroline Swift' on the hit AMC series "The Killing" opposite Joel Kinnaman. Other select television credits include starring on The CW series "LA Complex," as well as SyFy's hit series "Stargate: Atlantis." On the feature side, Jewel was most recently seen as the lead in "How to Plan an Orgy in a Small Town."

SHARON TAYLOR

LENA HOWARD



SHARON TAYLOR was born and raised in Vancouver, British Columbia. She received her Bachelor of Fine Arts degree in theatre before eventually pursuing a film and television career. She has since appeared on numerous notable television shows such as "Stargate: Atlantis", "Smallville", "Riverdale" and "The X Files" (2018). Sharon can currently be seen on the TV series "Bellevue" airing on the WGN channel in the United States, and on Netflix's newest sci-fi/horror series "Ghost Wars".





AUDREY WISE ALVAREZ

ADELAIDE HOWARD



AUDREY WISE ALVAREZ is an emerging young actress from Vancouver, Canada. She got her start on the CW's "Arrow" with the role of Zoe Lawton. She also appeared in feature film "FSM" and the web series "Free Table". Most recently, she appeared on ABC's hit show "The Good Doctor" as young Maddie.



SUSAN HOGAN

ERIN

SUSAN HOGAN is a Canadian film and theatre veteran with almost 50 years of film and tv credits to her name. She is most well known for her work on "Battlestar Galactica", "The Littlest Hobo", "The Little Vampire", "The L Word", and "The Company You Keep". More recently, she can be seen on Hallmark's "Hailey Dean Mystery" film series, and "Girlfriend's Guide to Divorce".



MICHELLE CHOI-LEE

CONSTABLE MARKS

MICHELLE CHOI-LEE is known for her work on series "Once Upon a Time", "Flash", and feature film "Death Note".



DARCEY JOHNSON

OLIVER

DARCEY JOHNSON is an actor who can be spotted in series such as "Supernatural", "Once Upon a Time", and "A Series of Unfortunate Events" as well as popular feature film, "Deadpool".



LATONYA WILLIAMS

REESA

LATONYA WILLIAMS is an actor working out of Vancouver, BC. Her television credits include, Motive, The Magicians, and Wayward Pines.

TensorFlow graph : program_AID/Model_CC_brand_2800_UpdateYEAR: 2025 (CC)_learning_rate: 0.001
g = tf.Graph() Artificially_Intelligent_Device_BRAND: Input: ReesaRay_ID_2385030GH32. GraphA
with g.as_default (Nanny): x= freeFlow_X_StrengthProgram (12)_markedBy (Hansons)_wire+imag
Build the model. Structure: (Nanny_2025_update0a); FrameType: Female; Hair: Brown; Eyes: Blue; Skin: Fair; Model = show_and_tell_model. ShowAndTellModel() FirstprotoType_CC_2025. Ta
Status: Child_Caregiver. Complete_imaging_package: pointPro(wiringBase)FullType [SoundProcess
model_config: mode= "love" / "care" / "teach"; LOVE_inception= IOS_love_inception / Care_primar
model.build () config_personalityType: CC (pull): Model_AJ_configure_ (+) (smile_model45675)(Sm
Set: Prime_Directive: Prime:Directive = CH / CH= (Child_appointed). CH(Child)_overrideAbility= af
)_CareLink(des: ReesaRay / ID 2385030GH32). Care_primary1aDirective (LoveA)
AIDCC2800_Drive_pointA: BEST_DirectionFlow= Drive_pointA_Best (Child_appointed); Best_Care =
Lease status: LEASED. Leased_By: LENA HOWARD. LeaseTime: (Month to Month). Cloverhill_Pa
Carelink Set: (Cloverhill_NANNY) <-> (Child_appointed)(Lease_Agreement_#5) / (AIDCC28002025
set up the learning rate. (Child_appointed)=(ADELAIDE_HOWARD: ID#2343328
learning_rate_progress_In = advanced_ if Flagged_Best_care + Care_primary1aDirective. Overrid
if learning_rate= tf.constant (teaching_c / initial_learning_rate) / (if training_config.learning_rate
num_sensors_per_epoch (teaching_config.num_examples_per_epoch) / decay

update: CC_SensorPrime22a
r(S) backu
nce_Brown_swatc
ProcessingF
teach_inceptio
Ref: Model_CJ2045 (Smile)
al = (PROSPER_TM) (prime)
dy68689_P
5: Injected
(rate)
y_Agency)

PRODUCTION TEAM



DIRECTORS/WRITERS THE SPEAR SISTERS



Twin sisters K A I L E Y and S A M S P E A R are director/writer/actors (and twin sisters) originally from Bowen Island, British Columbia. In 2012, they completed the four year film program at SFU, graduating with BFAs with honours. They have since directed both in both theatre and film. Their most recent short, *The Mary Alice Brandon File*, was the winner of the “New Voices of the Twilight Saga” competition hosted by Lionsgate, Facebook, and WIF-LA. It was both written and directed by the sisters. It’s been seen over 6 million times. The film won 3 Leo Awards and was nominated for 6 (including best direction). The twins have been recognized by WIF&TV-Vancouver with a Spotlight Award. In April/May of 2017, they shadowed a director on the CMT/ Lionsgate show *Nashville*.

Representation: Literary: Jenny Maryasis and Abby Glusker, UTA. Acting: Meagan McLeod, Lauren Levitt & Associates.



GRAHAM and NELSON TALBOT's cinematography focuses on creating beautiful, memorable images. Each twin contributes something different to every project they work on, yet their individual ideas come together to make uniquely crafted moments on screen. They have worked with the Spear Sisters previously on the award winning short film "The Mary Alice Brandon File"; a prequel for Lionsgate's "The Twilight Saga" made in collaboration with Lionsgate, Facebook and Women in Film LA.

The Talbot Twins have worked on feature and short length films, commercials, public service announcements and music videos. Including a commercial they shot and produced that aired at the 2015 Super Bowl LXIX, being the only 100% Canadian made ad to ever air at any Super Bowl. Their most recent feature, "Drone" starring Sean Bean has just been released.

The Talbot Twins also run their own film company Fortitude Productions.

Graham and Nelson are members of I.A.T.S.E 669 as Directors of Photography, and associate members of the Canadian Society of Cinematographers

CINEMATOPHAGERS THE TALBOT TWINS

Directive: Override_ability= for "Best". Else: teaching_rate = tf.constant (training_config.Love_inception_teaching_rate)
ifig_learning_rate_decay_factor > 0:
el_epoch / decay_steps = int(Care_Syst) :
NANNY (AIDCC28002025) : Lease#34538 ; (intSyst) / (Cloverhill_Nanny_Agency)



PRODUCERS

NATASHA WEHN

NATASHA's wide range of experiences in the industry have given her a comprehensive foundation as a producer. After earning a BA in Film at Simon Fraser University, she started working at Mayrs Brandstatter, a leading casting company in Vancouver, while also continuing to work in the independent industry primarily as a 1stAD on over 22 projects. She also produced the short "The Mary Alice Brandon File" which was won the international Twilight Saga "Storytellers" competition. This year her film as associate producer, "Luk'Luk'l", won Best BC Film Award at VIFF and Best Canadian First Feature Film this year at TIFF. Natasha values building strong community within film and believes that it is one of this generation's most powerful tools for positive change.



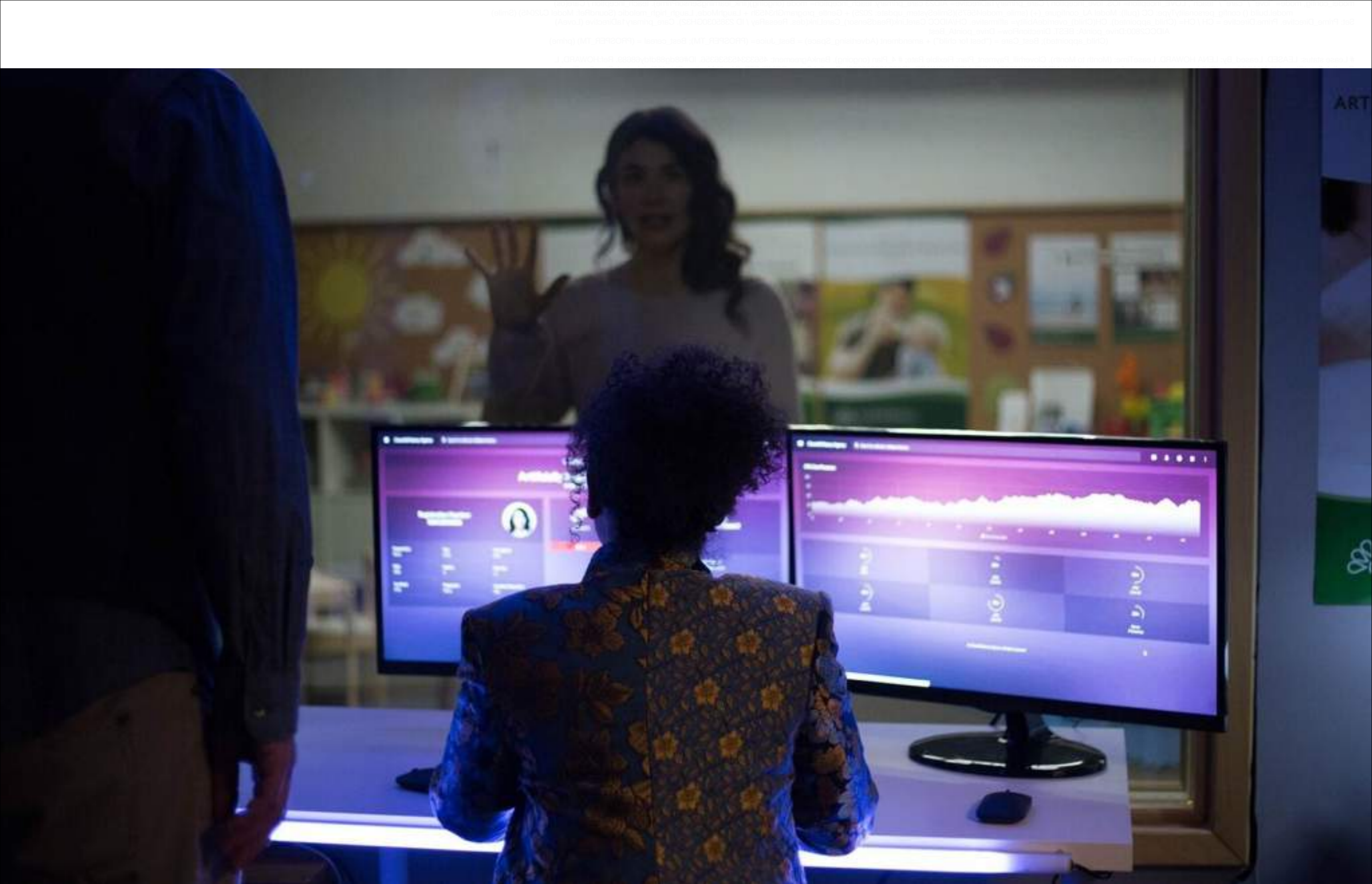
VICTORIA BURKART

VICTORIA was born and raised in New Zealand. She graduated with a Bachelor of Broadcast Communications majoring in Television in 2002 at the top of her class. She began work in television as a field director on a kids tv show called WNTV which aired on one of New Zealand's major TV channels, TV2. After working in the New Zealand TV industry as a field director, PA, coordinator and PM, Victoria progressed into working in Film and worked on major films such as King Kong, The Big White and Antarctic Journal. In 2006, Victoria began working with director Neill Blomkamp on films including District 9, Elysium, Chappie and various other projects. Victoria moved to Canada permanently in 2015 and hopes to stay here for the long haul. She is now working on the development of various short film and feature projects under her company Sizzle Snap Productions



LAUREN BEASON

LAUREN grew up on the outskirts of Victoria, and moved to Vancouver as a young adult to go to Simon Fraser University, eventually receiving a Bachelor of Fine Arts (majoring in Filmmaking). Like many young people, she fell in love with the city and decided to stay in Vancouver after school. She now works locally in the film industry within the Production Office department., and has a passion for Canadian stories and film. When she isn't working on a film production, she enjoys spending her time getting lost in the wood, or walking on a beach.



PRODUCTION DESIGNER REBECCA SJONJER EDITOR DANIEL JEFFREY

ig_mode= "love" / "care" / "teach", LOVE_inception= IOS_love_inception / Care_primary1aDirective= AID23_care_primary_teach_inception= mode (ongoing)(link_learningSensorPrime) teach_inception / Care(os)
model_build () config_personalityType: CC (pull): Model_AJ_configure (+) (smile_model45675)(SmileSystem_update_2025) + Gentle_programGh3453h + LaughMode_Laugh_high_melodic (SoundRef: Model_CJ2045) (Smile)
Directive: PrimeDirective = CH / CH= (Child_appointed), CH(Child_overrideAbility= affirmative, CH/AIDCC_CareLink(ReadSensor)_CareLink(des. ReesaRay / ID 2385030GH32), Care_primary1aDirective (LoveA)
set up the learning rate. (Child_appointed)=(ADELAIDE_HOWARD: ID#23433285839)
LEASSED_Leased_By: LENA_HOWARD, LeaseTime: (Month to Month), Cloverhill_Payment_Plan: Flexible_Rate, #4_Plan (ongoing), BankAgreement: 456333453536356, ID#68dg88dfdy68689, Ref:HOWARD, L
(Cloverhill_NANNY) <-> (Child_appointed)(Lease_Agreement_#5) / (AIDCC28002025) (ADELAIDE_HOWARD: ID#23433285839), CareLinkStatus: COMPLETE, (HealthMonitor_Chip456): injected, Standby_Fixed
set up the learning rate. (Child_appointed)=(ADELAIDE_HOWARD: ID#23433285839)
progress_fn = advanced . If Flagged_Best_care + Care_primary1aDirective.Override_ability= for "Best"; Else: teaching_rate = if.constant (training_config.Love_inception_teaching_rate)
rate= if.constant (teaching_config.initial_learning_rate) / if.constant (teaching_config.learning_rate_decay_factor > 0:
num_sensors_per_epoch = (teaching_config.num_examples_per_epoch) / decay_steps = int(Care_Syst):
NANNY (AIDCC28002025) : Lease#34538 : (intSyst) / (Cloverhill_Nanny_Agency)



COSTUME DESIGN BARBARA GREGUSOVA MAKE-UP ALANA CLOHESSY HAIR LEAH ROBERTS

MUSIC

ORIGINAL SCORE by:
LEONTY

ORIGINAL CREDITS SONG:
LA LUNA
Written by singer/songwriter
Sierra Lauren Spear
Sung by Jewel Staite





CASTING

“We had the exceptionally talented JEWEL STAITE playing the title role of **CC**. She had come to mind when we were writing the script. Once we thought of her, we couldn’t think of anyone better to play the role. We were looking for something very specific for CC. She is a robot designed to be the perfect nanny. She needed to be someone that kids would immediately like, and who parents would trust. She needed to balance being caring and fun, while also being strong, efficient and capable. She is designed to interact like a human, but ultimately she is a machine. We needed someone with the innate energy that would help bring this character to life and the skill level to pull off this unique challenge. We knew that Jewel would be perfect. As soon as we found out that we had been selected, we offered her the role. We were so happy that she agreed to come on board! She really did knock this role out of the park. She brought CC to screen with beautifully crafted nuance.”

“The character of **Lena Howard**, the mother of the child CC has been leased to take care of, was another role we were looking for a very specific energy for. When the audience is introduced to her, she is going through a very difficult time. We needed someone who could play the sharp edges and intense vulnerability of a woman cracking under pressure, while maintaining the deep sense of strength and love at the heart of her. This one was seeming like it was going to be a hard one to get right- that is until our casting director, JESSICA CAMERON, sent us a self-tape from SHARON TAYLOR. As soon as we saw Sharon’s tape we knew that we had found our Lena. We don’t know what rock we were living under that we weren’t aware of Sharon’s work before, but we are thrilled that we know her now. Sharon is a fantastic actor. She has the unique ability and skill to really transform with her roles. One of the great joys of working on this film has been discovering her as an actor.

AUDREY WISE ALVAREZ played Lena’s daughter, **Adelaide Howard**. She is the child that CC is leased to take care of. For this role, we needed an actor who could immediately convince us of the bond she has with CC. Audrey was stellar to work with. She is only 7 years old but she’s a pro. She has a spark of energy that lights up any room she’s in. “

The Spear Sisters



“Every film has its challenges getting to screen. This one had unique ones for sure! This film was made through Vancouver’s “Crazy8s” competition. Crazy8s is a crazy filmmaking challenge in which 6 filmmakers are given \$1000 and 8 days to complete a short film. Yes, that is 8 days from start of shooting to delivering the final film! When completed, it is shown to the Vancouver film community at a gala screening.

In order to be selected to participate in the challenge we first needed to go through rounds of pitching. We sent a video pitch along with over 200 other applicants. 42 filmmakers were then chosen to come in and live pitch to a panel of industry professionals. After that, we were narrowed down to a group of 12, and got to work on our script. From the 12 screenplays submitted, 6 were chosen to be made through Crazy8s. That included “CC”!

Being one of the 6 selected was such an honour. We were very excited with the amazing opportunity it presented; it gave us the platform to bring together a team of incredible people who we wanted to work with, and to get this short made - and made in a very short amount of time! It is very rare that you start shooting on a Friday, and then two weeks later you are watching it, completed, on the big screen. That was all very exciting. Of course though, with the waves of excitement came waves of panic. The moment that you are selected, is the moment you are also being faced with a HUGE challenge: “Ok, so... how are we going to get this done!?!”


It was a whirlwind indeed. No, we did not get much sleep. We think there was one night where we got just 4 hours and 45mins of sleep and that was verry exciting. All together, this film was a joy to work on. We credit that to the dynamite cast and crew working with us.”

- Spear Sisters


PRODUCTION STORY



CONTACT

 @ccshortfilm

 @ccshortfilm

 @ccshortfilm

email: ccshortfilm@gmail.com

JEWEL STAITE

AUDREY WISE ALVAREZ

SHARON TAYLOR

AIDCC28002025



CRAZY8s FILM SOCIETY PRESENTS "CC"

CAST LIST: JEWEL STAITE, SHARON TAYLOR, AUDREY WISE ALVAREZ, SUSAN HOGAN, DARCEY JOHNSON, LATONYA WILLIAMS, MICHELLE CHOI-LEE, JESSICA CAMERON, LEONTY, REBECCA SJONGER, GRAHAM TALBOT, NELSON TALBOT, JULIE BRUNS, MAT GILROY, ALEXANDRA STASESON, BRIAN MOWHA, PAUL ARMSTRONG, STEPHANIE HALBER, ALICIA BERNBAUM, INGO LOU, NATASHA WEHM, LAUREN BEASON, VICTORIA BURKHART, KAILEY SPEAR, SAM SPEAR, KAILEY SPEAR, SAM SPEAR

